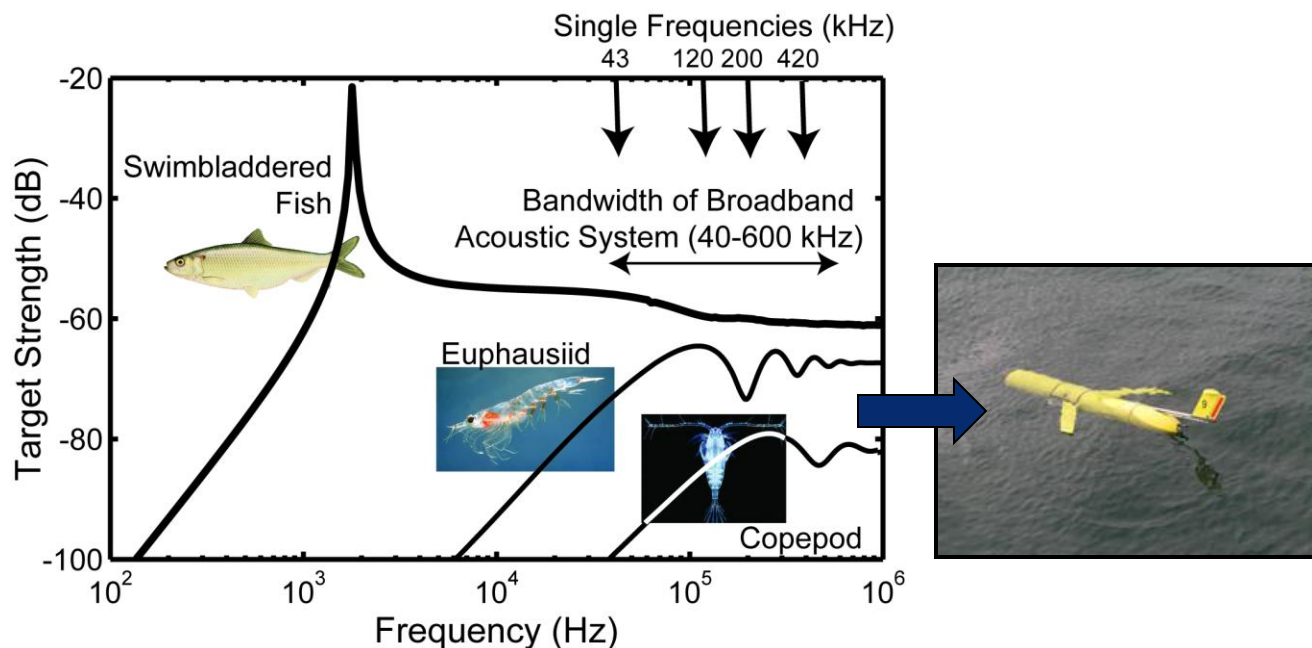


Observational Studies of Zooplankton Distribution and Interaction with Predators

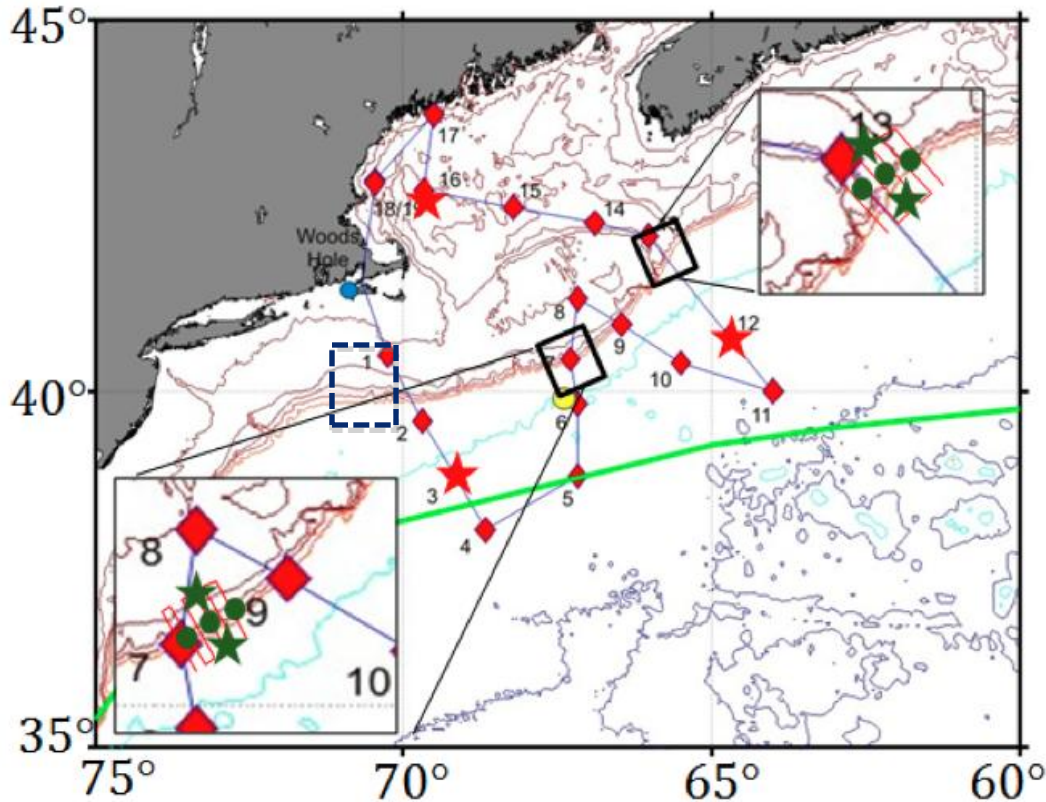
Gareth Lawson, WHOI



- Interested in the distribution, patchiness, and vertical movements of zooplankton, especially euphausiids, pteropods, siphonophores
- Interactions with predators, including midwater fishes, cetaceans, and seabirds
- Traditional multi-frequency methods provide a powerful tool for mapping distributions at high resolution, but suffer from low taxonomic resolution
- We are presently developing broadband systems with enhanced capabilities for species discrimination, for deployment on ships and autonomous platforms



Northwest Atlantic Shelf-Slope Surveys



- Zhou et al. February proposal to conduct zooplankton studies complementary to EURO-BASIN
- Also included a NW Atlantic pilot cruise targeting shelf-slope processes and instrument inter-calibration:
 - CTD/net stations
 - 24-hr time series stations
 - Mesoscale process studies
- Our group is also presently conducting studies of euphausiids and other pelagic organisms in shelf break canyons south of Cape Cod
- Anticipating future OOI-associated work and linking regional observations to BASIN studies of shelf-slope exchange